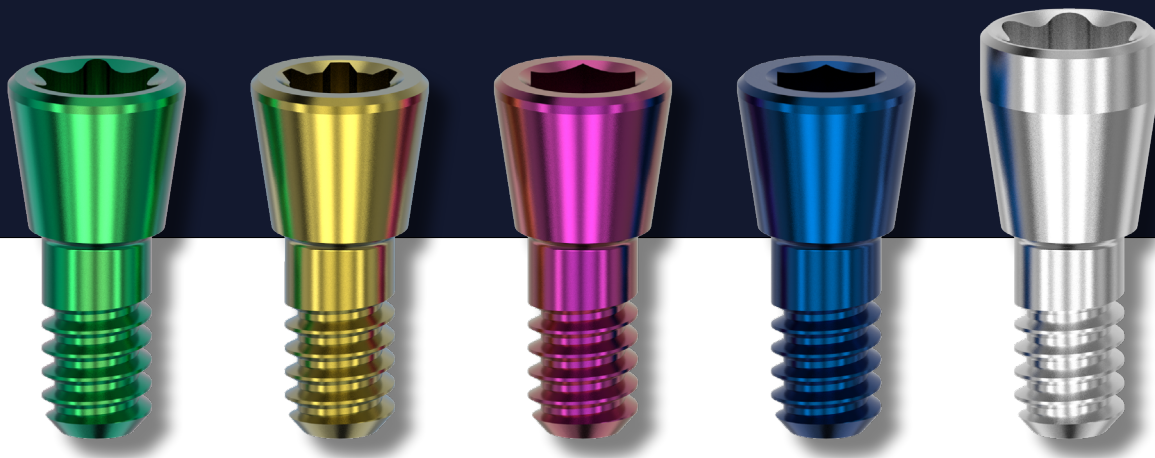


# Geo CLS The New Era!



## Product List

Code		Driver Type	Geo Multi-screw Compatibility	Color	
Product	Library				
CLS14-12H	CLS14_Straight	1.2 Hex	Osstem, Xive	Blue	
CLS14-127H		1.27 Hex	Dentium, Astra Tech, Zimmer	Pink	
CLS14-Star		Star	Nobel Biocare	Yellow	
CLS14-Torx		Torx	Straumann	Green	
CLS14-UV	CLS14_Angled	Universal	All Geo Multi-screw Abutments	Silver	

*\*For additional compatibility inquiries contact the manufacturer or your local dealer*

# What is CLS Screw?

Can be used with any materials such as PMMA, Resin, Graphite, Zirconia and various metals.



## Recommended Torque

up to 25 Ncm

## Compatibility

Geo Multiscrew Abutments (Osstem, Dentium, Straumann, Nobel)

UV Type: All Geo Multi-screw Abutments.

## UV Angle Solution

The screwdriver can be tilted up to 25 degrees. (55 degrees in total when combined with the Geo Angled Base Abutment)

## Advantages of Geo CLS

- 1 Easy to attach and detach as no cement is used. It is advantageous for maintenance and repair.
- 2 Screws are made in distinct colour for each implant system.
- 3 Accurate prosthetics can be manufactured using GeoMEDI's highly precise library.
- 4 Cost savings by not using cylinders.
- 5 Increased strength and stability with sufficient screw thickness.

