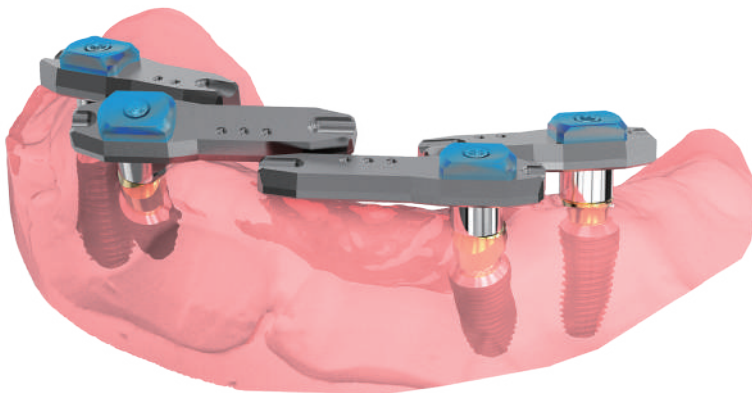


# ArcB

## Scanbody

Geo ArcB library (3shape, Exocad)

### ArcB scanbody solution



The ArcB scanbody solution establishes a new standard for accuracy and efficiency in implant prosthetics, specifically for full-arch edentulous cases and All-on-X treatments.

Its unique shape minimizes 3D data distortion during oral scanning, ensuring exceptional precision in full-arch implant scans.

Moreover, it offers wide compatibility with all implant systems that work with the Geo Multi-screw system/Nobel Multi-Unit.

The Geo ArcB library has been engineered with consideration for implant connection milling, Geo Multi-screw cylinder, and Geo CLS (Cementless system) applications.

### Indications of ArcB

- Partially edentulous case
- Complete denture patient
- Implant overdenture patient

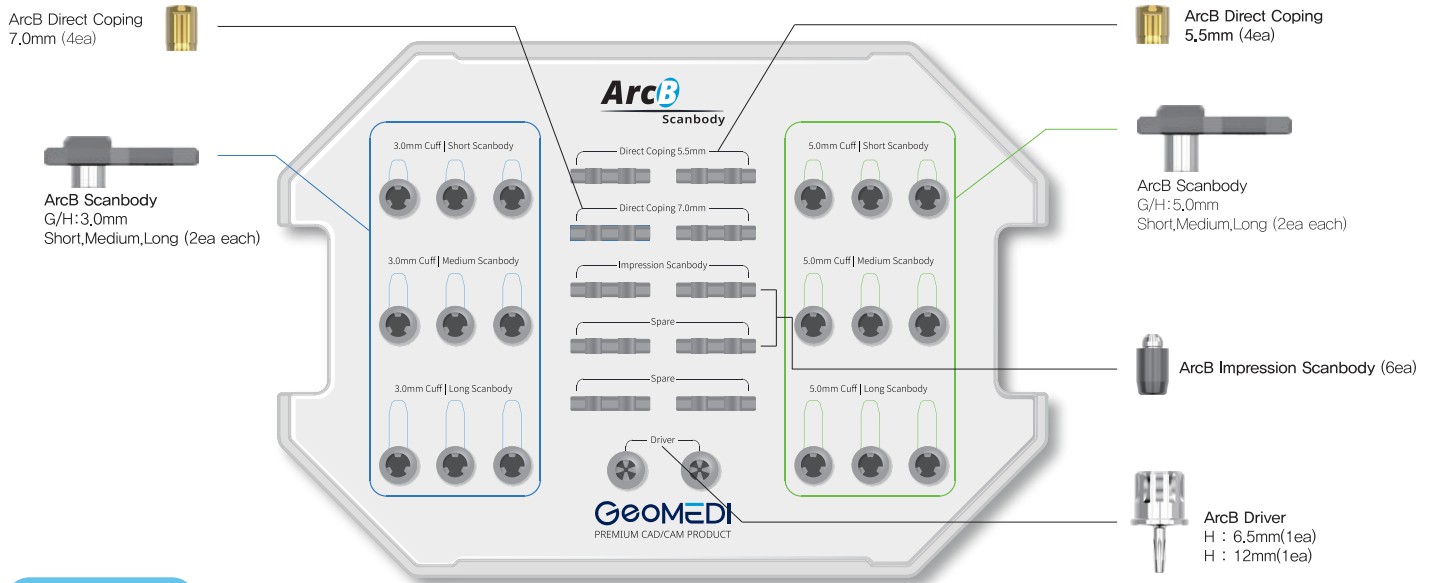
※ Hybrid / Bridge / Bar-Overdenture prosthetics

### What's the benefit of ArcB

- Minimize the distortion with its special design
- User-friendly** interface & **simple process**
- High durability & biocompatibility
- Cost-effective** solution
- Dedicated library with high accuracy

**ArcB scanbody Kit Set**

Compatible to Geo Multi-screw4,8 / Nobel MultiUnit 4,8  
Set of 25 components  
Product code : ABSK-SET



**Product List**

**ArcB scanbody**

- Material: Titanium Grade ELI with AB Coating
- Hand-tightening with dedicated Unigrip (Nobel driver)
- Packing unit includes: ArcB Scanbody and dedicated screw
- Easy finding of gingival heights by differentiated appearance



G/H:3.0mm



G/H:5.0mm



G/H:3.0mm / L : 17mm  
Product code : ArcB-3017N



G/H:3.0mm / L : 21mm  
Product code : ArcB-3021N



G/H:3.0mm / L : 25mm  
Product code : ArcB-3025N



G/H:5.0mm / L : 17mm  
Product code : ArcB-5017N



G/H:5.0mm / L : 21mm  
Product code : ArcB-5021N



G/H:5.0mm / L : 25mm  
Product code : ArcB-5025N

**ArcB Impression Direct Coping & scanbody**

- Used for direct impression for prosthetic fabrication.
- Made of Titanium Grade ELI with Tin Coating
- Hand-tightening with dedicated Unigrip (Nobel driver)
- Easy identification of gingival heights through differentiated appearance



D : 5.0mm / H : 5.5mm  
Product code : IPDC-5055N



D : 5.0mm / H : 7.0mm  
Product code : IPDC-5070N



D : 4.8mm / L : 9.1mm  
Product code : IMP-ArcB

**ArcB Driver**

- Screw Round Driver (Unigrip)



H : 6.0mm  
Product code : SRDNBS



H : 12mm  
Product code : SRDNBR

**ArcB scanbody Kit case**

Product code : ABSK

